

ARCADIA CUSTOM COMPUTER SIMULATION REPORT

SCOPE OF WORK

T225 Fixed Window- NFRC 100/200/500 simulations to determine U-Factor, Solar Heat Gain Coefficient, Visible Transmittance and Condensation Resistance ratings.

REPORT NUMBER

K1697.01-301-45

TEST DATE

10/18/19

ISSUE DATE

10/18/19

RECORD RETENTION END DATE

10/18/23

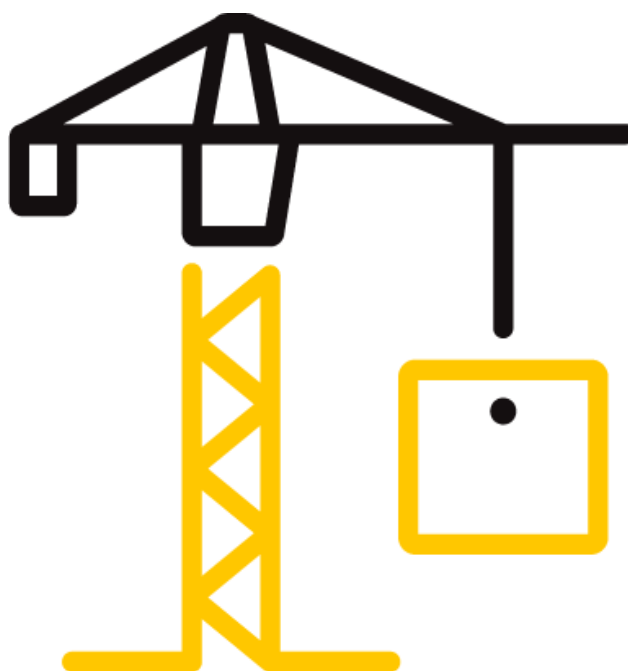
PAGES

26

DOCUMENT CONTROL NUMBER

RT-R-AMER-Test-0600 (08/31/18)

©2017 INTERTEK





Total Quality. Assured.

2524 E. Jensen Ave
Fresno, CA 93706

Telephone: 559-233-8705
Facsimile: 717-764-4129
www.intertek.com/building

TEST REPORT FOR ARCADIA CUSTOM

Report No: K1697.01-301-45

Date: 10/18/19

REPORT ISSUED TO

ARCADIA CUSTOM

9280 E. Old Vail Road
Tucson, Arizona 85747

SECTION 1

SUMMARY

SERIES/MODEL: T225 Fixed Window

Intertek Building & Construction (Intertek B&C) was contracted to perform U-Factor, Solar Heat Gain Coefficient, Visible Transmittance and Condensation Resistance simulations in accordance with the National Fenestration Rating Council (NFRC).

This report does not constitute certification of this product nor an opinion or endorsement by this laboratory. Intertek B&C will service this report for the entire test record retention period. The test record retention period ends five years after the test date. Test records, such as detailed drawings, datasheets, representative samples of test specimens, or other pertinent project documentation, will be retained for the entire test record retention period.

FOR INTERTEK B&C:

COMPLETED BY:	David L. Everitt
	Simulation Technician, NFRC
TITLE:	Certified Simulator
SIGNATURE:	
DATE:	10/18/19

REVIEWED BY:	Kenny C. White
TITLE:	Laboratory Manager, SIRC
SIGNATURE:	
DATE:	10/18/19

DLE:dle

This report is for the exclusive use of Intertek's Client and is provided pursuant to the agreement between Intertek and its Client. Intertek's responsibility and liability are limited to the terms and conditions of the agreement. Intertek assumes no liability to any party, other than to the Client in accordance with the agreement, for any loss, expense or damage occasioned by the use of this report. Only the Client is authorized to permit copying or distribution of this report and then only in its entirety. Any use of the Intertek name or one of its marks for the sale or advertisement of the tested material, product or service must first be approved in writing by Intertek. The observations and test results in this report are relevant only to the sample(s) tested. This report by itself does not imply that the material, product, or service is or has ever been under an Intertek certification program.

TEST REPORT FOR ARCADIA CUSTOM

Report No: K1697.01-301-45

Date: 10/18/19

SECTION 2

TEST METHODS

The products were evaluated in accordance with the following:

ANSI/NFRC 100-2017, Procedure for Determining Fenestration Product U-Factors

ANSI/NFRC 200-2017, Procedure for Determining Fenestration Product Solar Heat Gain Coefficient and Visible Transmittance at Normal Incidence

NFRC 500-2017, Procedure for Determining Fenestration Product Condensation Resistance Values

**Condensation Resistance results obtained from this procedure are for controlled laboratory conditions and do not include the effects of air movement through the specimen, solar radiation, and the thermal bridging that may occur due to the specific design and construction of the fenestration system opening.*

Ratings values included in this report are for submittals to an NFRC-licensed IA and are not meant to be used directly for labeling purposes. Only those values identified on a valid Certification Authorization Report (CAR) by an NFRC accredited Inspection Agency (IA) are to be used for labeling purposes. The ratings values were rounded in accordance with NFRC 601, NFRC Unit and Measurement Policy.

Intertek B&C is an NFRC accredited simulation laboratory and all simulations were conducted in full compliance with NFRC approved procedures and specifications. The values included in this report are not considered in compliance with ANSI/NFRC 100, ANSI/NFRC 200, and/or NFRC 500 unless the associated validation test requirements have been satisfied, as applicable.

TEST REPORT FOR ARCADIA CUSTOM

Report No: K1697.01-301-45

Date: 10/18/19

SECTION 3

TEST PROCEDURE

The total product, including specific frame, spacer, and glass details, was modeled using NFRC approved software.

FRAME AND EDGE MODELING	THERM 7.4.4
CENTER-OF-GLASS MODELING	WINDOW 7.4.14
TOTAL PRODUCT CALCULATIONS	WINDOW 7.4.14
SPECTRAL DATA LIBRARY	IGDB 68.0

Modeling Assumptions / Technical Interpretations

Any modeling assumptions and technical interpretations required to model this product are listed below.

- 1) To prevent air infiltration, tape was applied to all interior sash crack locations.
- 2) Anodized and painted aluminum finish grouped per ANSI/NFRC 100-2017, Section 4.2.1.L. Painted finish is the group leader.

SECTION 4

SIMULATION SPECIMEN DESCRIPTION

SERIES/MODEL	T225 Fixed Window
PRODUCT TYPE	Fixed, 4-Sided
FRAME MATERIAL	AT - Aluminum w/ Thermal Breaks - All Members
SASH MATERIAL	NA - Not Applicable
STANDARD SIZE	1200mm x 1500mm
NFRC CPD NUMBER	-

TEST REPORT FOR ARCADIA CUSTOM

Report No: K1697.01-301-45

Date: 10/18/19

SECTION 4 (Continued)

SIMULATION SPECIMEN DESCRIPTION

SPACER OPTIONS			
TYPE	PRIMARY SEAL	SECONDARY SEAL	CODE
Allmetal LPX Spacer	PIB	Polyurethane	SS-D

GRID OPTIONS		
GRID SIZE	GRID TYPE	GRID PATTERN
0.500" x 0.750"	Aluminum Rectangular Grid (Painted)	NFRC Standard
2.285" x 2.250"	TDL	NFRC Standard

REINFORCEMENT OPTIONS	
LOCATION	MATERIAL
None	-

GAS FILLING TECHNIQUE	
FILL TYPE	METHOD
95% Argon	Evacuated Chamber

EDGE-OF-GLASS CONSTRUCTION	
INTERIOR CONDITION	Glazing tape between the glass and glazing stop.
EXTERIOR CONDITION	Glazing gasket between the glass and glazing bead.

WEATHERSTRIPPING		
TYPE	QUANTITY	LOCATION
None	-	-

FRAME/SASH MATERIALS FINISH	
INTERIOR	Aluminum - Anodized and Painted
EXTERIOR	Aluminum - Anodized and Painted

VALIDATION MATRIX*	
PRODUCT LINE	REPORT NUMBER
None	-

*These products are part of a validation matrix. Only one is required for validation testing.

TEST REPORT FOR ARCADIA CUSTOM

Report No: K1697.01-301-45

Date: 10/18/19

SECTION 5

SPECIALTY PRODUCTS TABLE

The specialty products method allows the manufacturer to determine the overall product SHGC and VT for any glazing option. The center of glass SHGC and/or VT must be determined using WINDOW 7.4.14. The method calculates overall product SHGC and VT indexed on center of glass properties. All values used in the calculations are truncated to six decimal place precision.

	No Dividers	Dividers < 1	Dividers > 1
SHGC0	0.001838	0.004783	0.007569
SHGC1	0.881155	0.794244	0.712013
VT0	0.000000	0.000000	0.000000
VT1	0.879317	0.789461	0.704443

$$SHGC = SHGC0 + SHGCc (SHGC1 - SHGC0)$$

$$VT = VT0 + VTc (VT1 - VT0)$$

TEST REPORT FOR ARCADIA CUSTOM

Report No: K1697.01-301-45

Date: 10/18/19

SECTION 6

SIMULATION RESULTS

TOTAL PRODUCT CALCULATIONS (T225 Fixed Window)												
Option Number	Pane Thickness 1 (in)	Gap Width 1 (in)	Pane Thickness 2 (in)	Gap Width 2 (in)	Pane Thickness 3 (in)	Gap Width 3 (in)	Pane Thickness 4 (in)	Gap Fill	Low-e (Surface #)	Tint	Spacer	Grid Type
	U-Factor (Btu/Hr-Ft2-F)			Solar Heat Gain Coefficient (SHGC) Grids (None / <1 / >=1)				Visible Transmittance (VT) Grids (None / <1 / >=1)		Condensation Resistance (CR)		
1	Clr / Air / Clr - 1"(6mm-6mm)											
	0.224	0.500	0.224					AIR		CL	SS-D	N
	U-Factor 0.50			SHGC(N) 0.63				VT(N) 0.70		CR 41		
2	Clr / Air / Clr - 1"(6mm-6mm)											
	0.224	0.500	0.224					AIR		CL	SS-D	S
	U-Factor 0.58			SHGC(<1) 0.57				VT(<1) 0.63		CR 41		
3	Clr / Air / Clr - 1"(6mm-6mm)											
	0.224	0.500	0.224					AIR		CL	SS-D	T
	U-Factor 0.71			SHGC(>1) 0.51				VT(>1) 0.56		CR 26		
4	6227 / Air / Clr - 1"(6mm-6mm)											
	0.221	0.500	0.224					AIR	0.030(#2)	CL	SS-D	N
	U-Factor 0.35			SHGC(N) 0.25				VT(N) 0.53		CR 42		
5	6227 / Air / Clr - 1"(6mm-6mm)											
	0.221	0.500	0.224					AIR	0.030(#2)	CL	SS-D	S
	U-Factor 0.47			SHGC(<1) 0.23				VT(<1) 0.48		CR 42		
6	6227 / Air / Clr - 1"(6mm-6mm)											
	0.221	0.500	0.224					AIR	0.030(#2)	CL	SS-D	T
	U-Factor 0.61			SHGC(>1) 0.21				VT(>1) 0.43		CR 30		
7	6227 / Air / IS20 - 1"(6mm-6mm)											
	0.221	0.500	0.221					AIR	0.030(#2) / 0.198(#4)	CL	SS-D	N
	U-Factor 0.30			SHGC(N) 0.24				VT(N) 0.52		CR 40		
8	6227 / Air / IS20 - 1"(6mm-6mm)											
	0.221	0.500	0.221					AIR	0.030(#2) / 0.198(#4)	CL	SS-D	S
	U-Factor 0.37			SHGC(<1) 0.22				VT(<1) 0.46		CR 33		
9	6227 / Air / IS20 - 1"(6mm-6mm)											
	0.221	0.500	0.221					AIR	0.030(#2) / 0.198(#4)	CL	SS-D	T
	U-Factor 0.56			SHGC(>1) 0.20				VT(>1) 0.41		CR 25		
10	SN68 / Air / Clr - 1"(6mm-6mm)											
	0.221	0.500	0.224					AIR	0.039(#2)	CL	SS-D	N
	U-Factor 0.35			SHGC(N) 0.33				VT(N) 0.60		CR 42		

TEST REPORT FOR ARCADIA CUSTOM

Report No: K1697.01-301-45

Date: 10/18/19

SECTION 6 (Continued)

SIMULATION RESULTS

TOTAL PRODUCT CALCULATIONS (T225 Fixed Window)												
Option Number	Pane Thickness 1 (in)	Gap Width 1 (in)	Pane Thickness 2 (in)	Gap Width 2 (in)	Pane Thickness 3 (in)	Gap Width 3 (in)	Pane Thickness 4 (in)	Gap Fill	Low-e (Surface #)	Tint	Spacer	Grid Type
	U-Factor (Btu/Hr-Ft ² -F)			Solar Heat Gain Coefficient (SHGC) Grids (None / <1 / >=1)				Visible Transmittance (VT) Grids (None / <1 / >=1)		Condensation Resistance (CR)		
11	SN68 / Air / Clr - 1"(6mm-6mm)											
	0.221	0.500	0.224					AIR	0.039(#2)	CL	SS-D	S
	U-Factor 0.47			SHGC(<1) 0.30				VT(<1) 0.53		CR 42		
12	SN68 / Air / Clr - 1"(6mm-6mm)											
	0.221	0.500	0.224					AIR	0.039(#2)	CL	SS-D	T
	U-Factor 0.62			SHGC(>1) 0.27				VT(>1) 0.48		CR 30		
13	SN68 / Air / IS20 - 1"(6mm-6mm)											
	0.221	0.500	0.221					AIR	0.039(#2) / 0.198(#4)	CL	SS-D	N
	U-Factor 0.30			SHGC(N) 0.32				VT(N) 0.58		CR 40		
14	SN68 / Air / IS20 - 1"(6mm-6mm)											
	0.221	0.500	0.221					AIR	0.039(#2) / 0.198(#4)	CL	SS-D	S
	U-Factor 0.37			SHGC(<1) 0.29				VT(<1) 0.52		CR 33		
15	SN68 / Air / IS20 - 1"(6mm-6mm)											
	0.221	0.500	0.221					AIR	0.039(#2) / 0.198(#4)	CL	SS-D	T
	U-Factor 0.56			SHGC(>1) 0.26				VT(>1) 0.46		CR 25		
16	366 / Air / Clr - 1"(6mm-6mm)											
	0.225	0.500	0.224					AIR	0.022(#2)	CL	SS-D	N
	U-Factor 0.35			SHGC(N) 0.25				VT(N) 0.55		CR 42		
17	366 / Air / Clr - 1"(6mm-6mm)											
	0.225	0.500	0.224					AIR	0.022(#2)	CL	SS-D	S
	U-Factor 0.47			SHGC(<1) 0.22				VT(<1) 0.50		CR 42		
18	366 / Air / Clr - 1"(6mm-6mm)											
	0.225	0.500	0.224					AIR	0.022(#2)	CL	SS-D	T
	U-Factor 0.61			SHGC(>1) 0.20				VT(>1) 0.44		CR 30		
19	366 / Air / i89 - 1"(6mm-6mm)											
	0.225	0.500	0.223					AIR	0.022(#2) / 0.149(#4)	CL	SS-D	N
	U-Factor 0.29			SHGC(N) 0.24				VT(N) 0.54		CR 39		
20	366 / Air / i89 - 1"(6mm-6mm)											
	0.225	0.500	0.223					AIR	0.022(#2) / 0.149(#4)	CL	SS-D	S
	U-Factor 0.36			SHGC(<1) 0.22				VT(<1) 0.48		CR 32		

TEST REPORT FOR ARCADIA CUSTOM

Report No: K1697.01-301-45

Date: 10/18/19

SECTION 6 (Continued)

SIMULATION RESULTS

TOTAL PRODUCT CALCULATIONS (T225 Fixed Window)												
Option Number	Pane Thickness 1 (in)	Gap Width 1 (in)	Pane Thickness 2 (in)	Gap Width 2 (in)	Pane Thickness 3 (in)	Gap Width 3 (in)	Pane Thickness 4 (in)	Gap Fill	Low-e (Surface #)	Tint	Spacer	Grid Type
	U-Factor (Btu/Hr-Ft2-F)			Solar Heat Gain Coefficient (SHGC) Grids (None / <1 / >=1)				Visible Transmittance (VT) Grids (None / <1 / >=1)		Condensation Resistance (CR)		
21	366 / Air / i89 - 1"(6mm-6mm)											
	0.225	0.500	0.223					AIR	0.022(#2) / 0.149(#4)	CL	SS-D	T
	U-Factor 0.56			SHGC(>1) 0.20				VT(>1) 0.43		CR 25		
22	270 / Air / Clr - 1"(6mm-6mm)											
	0.236	0.500	0.224					AIR	0.037(#2)	CL	SS-D	N
	U-Factor 0.35			SHGC(N) 0.32				VT(N) 0.60		CR 42		
23	270 / Air / Clr - 1"(6mm-6mm)											
	0.236	0.500	0.224					AIR	0.037(#2)	CL	SS-D	S
	U-Factor 0.47			SHGC(<1) 0.29				VT(<1) 0.54		CR 42		
24	270 / Air / Clr - 1"(6mm-6mm)											
	0.236	0.500	0.224					AIR	0.037(#2)	CL	SS-D	T
	U-Factor 0.62			SHGC(>1) 0.26				VT(>1) 0.48		CR 30		
25	270 / Air / i89 - 1"(6mm-6mm)											
	0.236	0.500	0.223					AIR	0.037(#2) / 0.149(#4)	CL	SS-D	N
	U-Factor 0.29			SHGC(N) 0.31				VT(N) 0.58		CR 39		
26	270 / Air / i89 - 1"(6mm-6mm)											
	0.236	0.500	0.223					AIR	0.037(#2) / 0.149(#4)	CL	SS-D	S
	U-Factor 0.36			SHGC(<1) 0.28				VT(<1) 0.52		CR 32		
27	270 / Air / i89 - 1"(6mm-6mm)											
	0.236	0.500	0.223					AIR	0.037(#2) / 0.149(#4)	CL	SS-D	T
	U-Factor 0.56			SHGC(>1) 0.25				VT(>1) 0.47		CR 25		
28	Clr / Arg / Clr - 1"(6mm-6mm)											
	0.224	0.500	0.224					ARG95		CL	SS-D	N
	U-Factor 0.48			SHGC(N) 0.63				VT(N) 0.70		CR 41		
29	Clr / Arg / Clr - 1"(6mm-6mm)											
	0.224	0.500	0.224					ARG95		CL	SS-D	S
	U-Factor 0.57			SHGC(<1) 0.57				VT(<1) 0.63		CR 37		
30	Clr / Arg / Clr - 1"(6mm-6mm)											
	0.224	0.500	0.224					ARG95		CL	SS-D	T
	U-Factor 0.69			SHGC(>1) 0.51				VT(>1) 0.56		CR 27		

TEST REPORT FOR ARCADIA CUSTOM

Report No: K1697.01-301-45

Date: 10/18/19

SECTION 6 (Continued)

SIMULATION RESULTS

TOTAL PRODUCT CALCULATIONS (T225 Fixed Window)												
Option Number	Pane Thickness 1 (in)	Gap Width 1 (in)	Pane Thickness 2 (in)	Gap Width 2 (in)	Pane Thickness 3 (in)	Gap Width 3 (in)	Pane Thickness 4 (in)	Gap Fill	Low-e (Surface #)	Tint	Spacer	Grid Type
	U-Factor (Btu/Hr-Ft2-F)			Solar Heat Gain Coefficient (SHGC) Grids (None / <1 / >=1)				Visible Transmittance (VT) Grids (None / <1 / >=1)		Condensation Resistance (CR)		
31	6227 / Arg / Clr - 1"(6mm-6mm)											
	0.221	0.500	0.224					ARG95	0.030(#2)	CL	SS-D	N
	U-Factor 0.31			SHGC(N) 0.25				VT(N) 0.53		CR 42		
32	6227 / Arg / Clr - 1"(6mm-6mm)											
	0.221	0.500	0.224					ARG95	0.030(#2)	CL	SS-D	S
	U-Factor 0.44			SHGC(<1) 0.22				VT(<1) 0.48		CR 42		
33	6227 / Arg / Clr - 1"(6mm-6mm)											
	0.221	0.500	0.224					ARG95	0.030(#2)	CL	SS-D	T
	U-Factor 0.59			SHGC(>1) 0.20				VT(>1) 0.43		CR 31		
34	6227 / Arg / IS20 - 1"(6mm-6mm)											
	0.221	0.500	0.221					ARG95	0.030(#2) / 0.198(#4)	CL	SS-D	N
	U-Factor 0.27			SHGC(N) 0.24				VT(N) 0.52		CR 41		
35	6227 / Arg / IS20 - 1"(6mm-6mm)											
	0.221	0.500	0.221					ARG95	0.030(#2) / 0.198(#4)	CL	SS-D	S
	U-Factor 0.34			SHGC(<1) 0.22				VT(<1) 0.46		CR 35		
36	6227 / Arg / IS20 - 1"(6mm-6mm)											
	0.221	0.500	0.221					ARG95	0.030(#2) / 0.198(#4)	CL	SS-D	T
	U-Factor 0.55			SHGC(>1) 0.20				VT(>1) 0.41		CR 26		
37	SN68 / Arg / Clr - 1"(6mm-6mm)											
	0.221	0.500	0.224					ARG95	0.039(#2)	CL	SS-D	N
	U-Factor 0.31			SHGC(N) 0.33				VT(N) 0.60		CR 42		
38	SN68 / Arg / Clr - 1"(6mm-6mm)											
	0.221	0.500	0.224					ARG95	0.039(#2)	CL	SS-D	S
	U-Factor 0.44			SHGC(<1) 0.30				VT(<1) 0.53		CR 42		
39	SN68 / Arg / Clr - 1"(6mm-6mm)											
	0.221	0.500	0.224					ARG95	0.039(#2)	CL	SS-D	T
	U-Factor 0.59			SHGC(>1) 0.27				VT(>1) 0.48		CR 30		
40	SN68 / Arg / IS20 - 1"(6mm-6mm)											
	0.221	0.500	0.221					ARG95	0.039(#2) / 0.198(#4)	CL	SS-D	N
	U-Factor 0.27			SHGC(N) 0.32				VT(N) 0.58		CR 41		

TEST REPORT FOR ARCADIA CUSTOM

Report No: K1697.01-301-45

Date: 10/18/19

SECTION 6 (Continued)

SIMULATION RESULTS

TOTAL PRODUCT CALCULATIONS (T225 Fixed Window)												
Option Number	Pane Thickness 1 (in)	Gap Width 1 (in)	Pane Thickness 2 (in)	Gap Width 2 (in)	Pane Thickness 3 (in)	Gap Width 3 (in)	Pane Thickness 4 (in)	Gap Fill	Low-e (Surface #)	Tint	Spacer	Grid Type
	U-Factor (Btu/Hr-Ft ² -F)			Solar Heat Gain Coefficient (SHGC) Grids (None / <1 / >=1)				Visible Transmittance (VT) Grids (None / <1 / >=1)		Condensation Resistance (CR)		
41	SN68 / Arg / IS20 - 1"(6mm-6mm)											
	0.221	0.500	0.221					ARG95	0.039(#2) / 0.198(#4)	CL	SS-D	S
	U-Factor 0.35			SHGC(<1) 0.29				VT(<1) 0.52		CR 34		
42	SN68 / Arg / IS20 - 1"(6mm-6mm)											
	0.221	0.500	0.221					ARG95	0.039(#2) / 0.198(#4)	CL	SS-D	T
	U-Factor 0.55			SHGC(>1) 0.26				VT(>1) 0.46		CR 26		
43	366 / Arg / Clr - 1"(6mm-6mm)											
	0.225	0.500	0.224					ARG95	0.022(#2)	CL	SS-D	N
	U-Factor 0.31			SHGC(N) 0.24				VT(N) 0.55		CR 42		
44	366 / Arg / Clr - 1"(6mm-6mm)											
	0.225	0.500	0.224					ARG95	0.022(#2)	CL	SS-D	S
	U-Factor 0.44			SHGC(<1) 0.22				VT(<1) 0.50		CR 42		
45	366 / Arg / Clr - 1"(6mm-6mm)											
	0.225	0.500	0.224					ARG95	0.022(#2)	CL	SS-D	T
	U-Factor 0.59			SHGC(>1) 0.20				VT(>1) 0.44		CR 31		
46	366 / Arg / i89 - 1"(6mm-6mm)											
	0.225	0.500	0.223					ARG95	0.022(#2) / 0.149(#4)	CL	SS-D	N
	U-Factor 0.26			SHGC(N) 0.23				VT(N) 0.54		CR 41		
47	366 / Arg / i89 - 1"(6mm-6mm)											
	0.225	0.500	0.223					ARG95	0.022(#2) / 0.149(#4)	CL	SS-D	S
	U-Factor 0.33			SHGC(<1) 0.21				VT(<1) 0.48		CR 34		
48	366 / Arg / i89 - 1"(6mm-6mm)											
	0.225	0.500	0.223					ARG95	0.022(#2) / 0.149(#4)	CL	SS-D	T
	U-Factor 0.54			SHGC(>1) 0.19				VT(>1) 0.43		CR 26		
49	270 / Arg / Clr - 1"(6mm-6mm)											
	0.236	0.500	0.224					ARG95	0.037(#2)	CL	SS-D	N
	U-Factor 0.31			SHGC(N) 0.31				VT(N) 0.60		CR 42		
50	270 / Arg / Clr - 1"(6mm-6mm)											
	0.236	0.500	0.224					ARG95	0.037(#2)	CL	SS-D	S
	U-Factor 0.44			SHGC(<1) 0.29				VT(<1) 0.54		CR 42		

TEST REPORT FOR ARCADIA CUSTOM

Report No: K1697.01-301-45

Date: 10/18/19

SECTION 6 (Continued)

SIMULATION RESULTS

TOTAL PRODUCT CALCULATIONS (T225 Fixed Window)												
Option Number	Pane Thickness 1 (in)	Gap Width 1 (in)	Pane Thickness 2 (in)	Gap Width 2 (in)	Pane Thickness 3 (in)	Gap Width 3 (in)	Pane Thickness 4 (in)	Gap Fill	Low-e (Surface #)	Tint	Spacer	Grid Type
	U-Factor (Btu/Hr-Ft ² -F)			Solar Heat Gain Coefficient (SHGC) Grids (None / <1 / >=1)				Visible Transmittance (VT) Grids (None / <1 / >=1)		Condensation Resistance (CR)		
51	270 / Arg / Clr - 1"(6mm-6mm)											
	0.236	0.500	0.224					ARG95	0.037(#2)	CL	SS-D	T
	U-Factor 0.59			SHGC(>1) 0.26				VT(>1) 0.48		CR 30		
52	270 / Arg / i89 - 1"(6mm-6mm)											
	0.236	0.500	0.223					ARG95	0.037(#2) / 0.149(#4)	CL	SS-D	N
	U-Factor 0.26			SHGC(N) 0.31				VT(N) 0.58		CR 41		
53	270 / Arg / i89 - 1"(6mm-6mm)											
	0.236	0.500	0.223					ARG95	0.037(#2) / 0.149(#4)	CL	SS-D	S
	U-Factor 0.34			SHGC(<1) 0.28				VT(<1) 0.52		CR 33		
54	270 / Arg / i89 - 1"(6mm-6mm)											
	0.236	0.500	0.223					ARG95	0.037(#2) / 0.149(#4)	CL	SS-D	T
	U-Factor 0.54			SHGC(>1) 0.25				VT(>1) 0.47		CR 26		



Total Quality. Assured.

2524 E. Jensen Ave
Fresno, CA 93706

Telephone: 559-233-8705
Facsimile: 717-764-4129
www.intertek.com/building

TEST REPORT FOR ARCADIA CUSTOM

Report No: K1697.01-301-45

Date: 10/18/19

SECTION 7

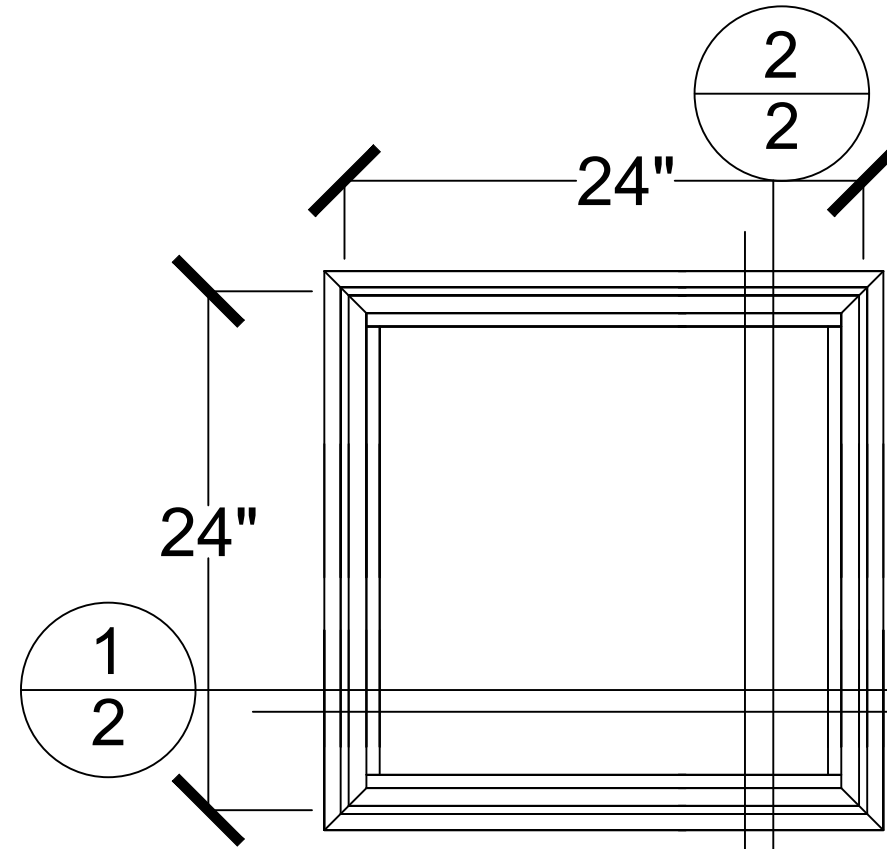
DRAWINGS / BILL OF MATERIALS

The drawings which follow have been reviewed by Intertek B&C and are representative of the simulation results reported herein. Any deviations are documented herein or on the drawings.

Extruded Nail-on Frame Fixed

intertek
Total Quality. Assured.

Report #: K1697.01-301-45
Date: 10/17/19
Verified by: *D.J. Smith*



CUSTOMERS REVIEW:

APPROVED FOR FABRICATION, NO EXCEPTIONS TAKEN. BY: _____ DATE : _____
APPROVED FOR FABRICATION, AS NOTED. BY: _____ DATE : _____
PLEASE REVISE & RESUBMIT, DO NOT FABRICATE. BY: _____ DATE : _____

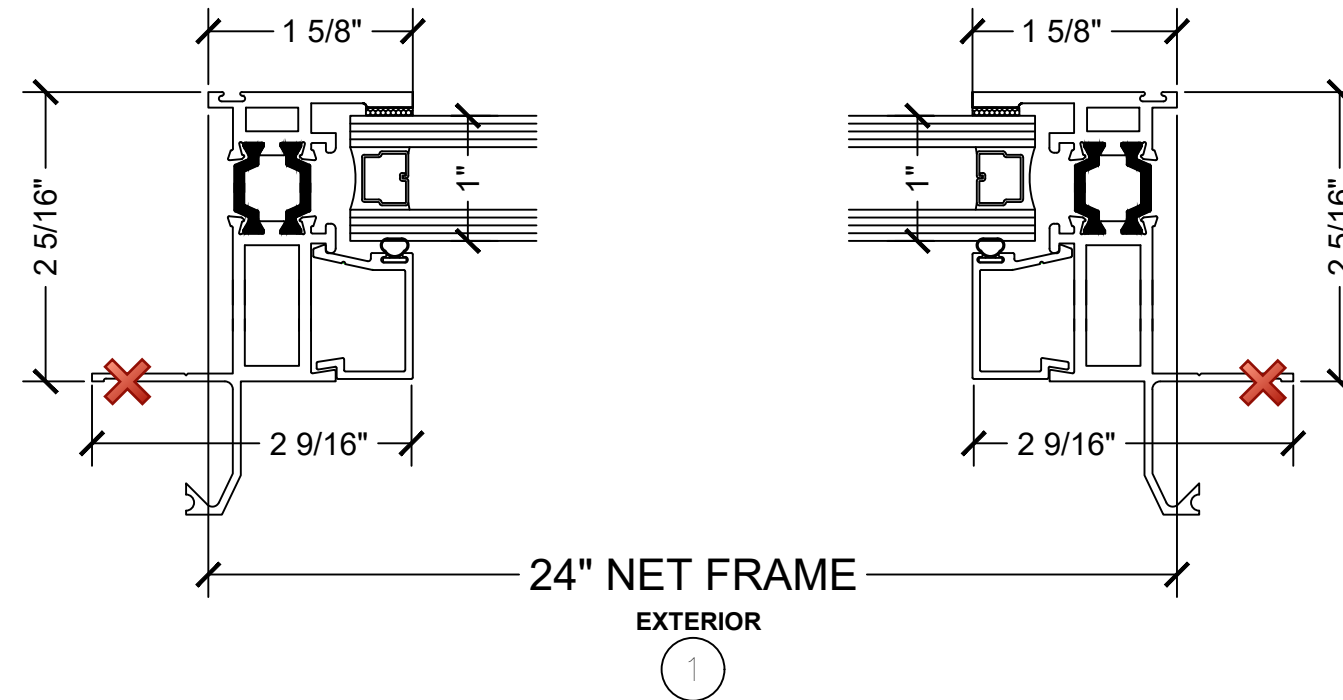
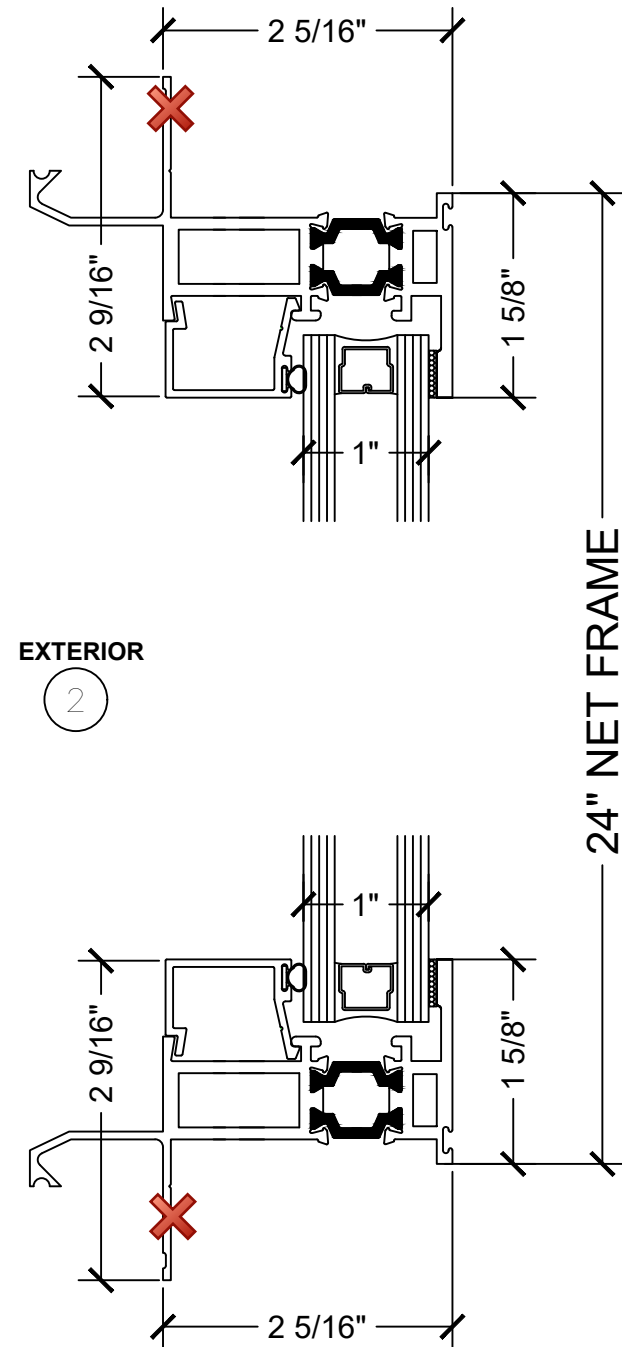
REV.:	DESCRIPTION:	DATE:
△		

JOB NAME: T225 V-6 DRAWINGS	CUSTOMER: ARCADIA CUSTOM	TITLE: ELEVATION	PRODUCT: T225 SERIES	DRAWING #:
FINISH:	DRAWN BY: MANDIE WHITESIDE	SCALE: NONE	DATE: 6-18-19	SHEET: 1 OF 18

Extruded Nail-on Frame Fixed

intertek
Total Quality. Assured.

Report #: K1697.01-301-45
Date: 10/17/19
Verified by: *D.J. Smith*



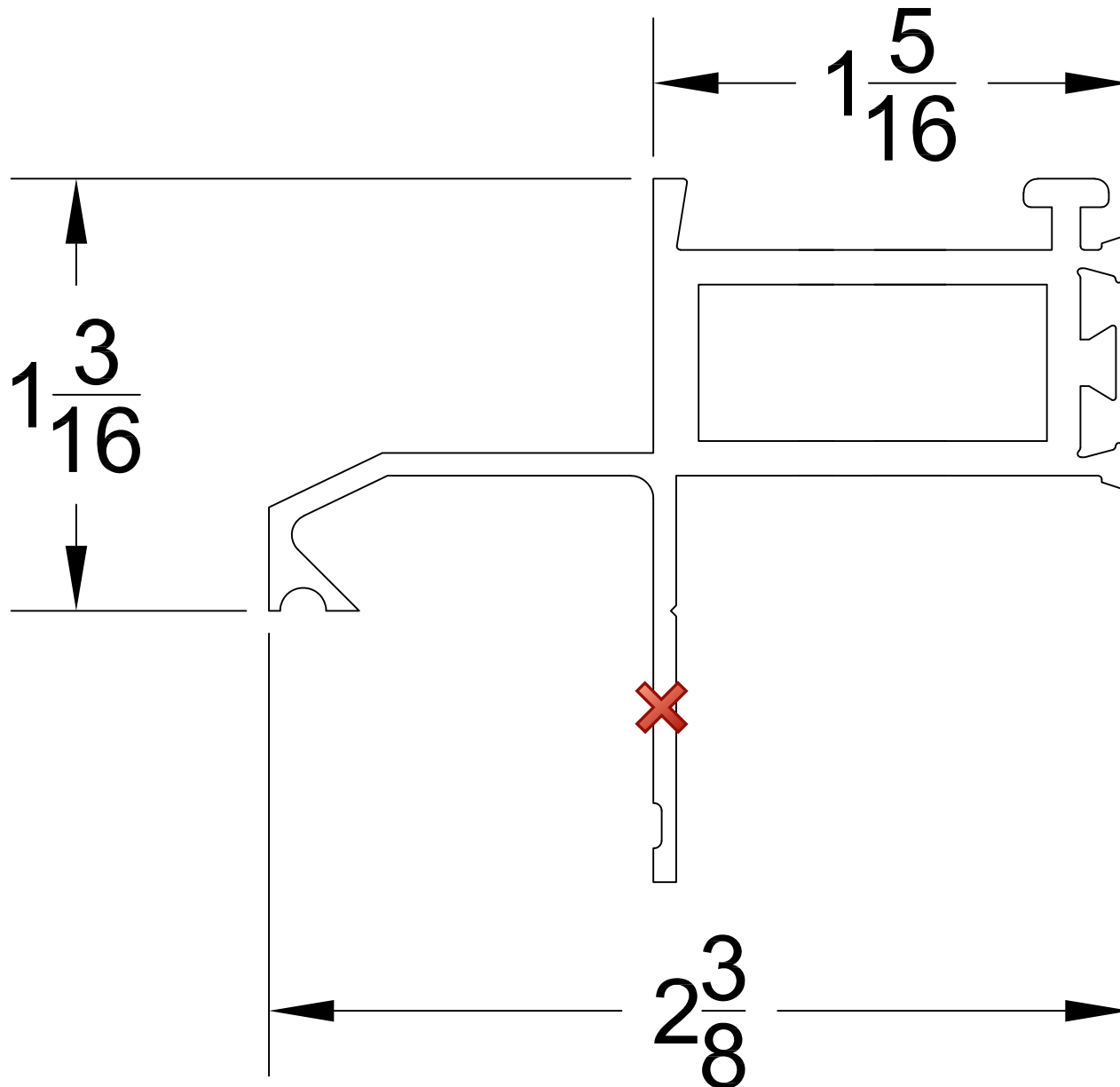
CUSTOMERS REVIEW:

APPROVED FOR FABRICATION, NO EXCEPTIONS TAKEN.
BY: _____ DATE : _____
APPROVED FOR FABRICATION, AS NOTED.
BY: _____ DATE : _____
PLEASE REVISE & RESUBMIT, DO NOT FABRICATE.
BY: _____ DATE : _____

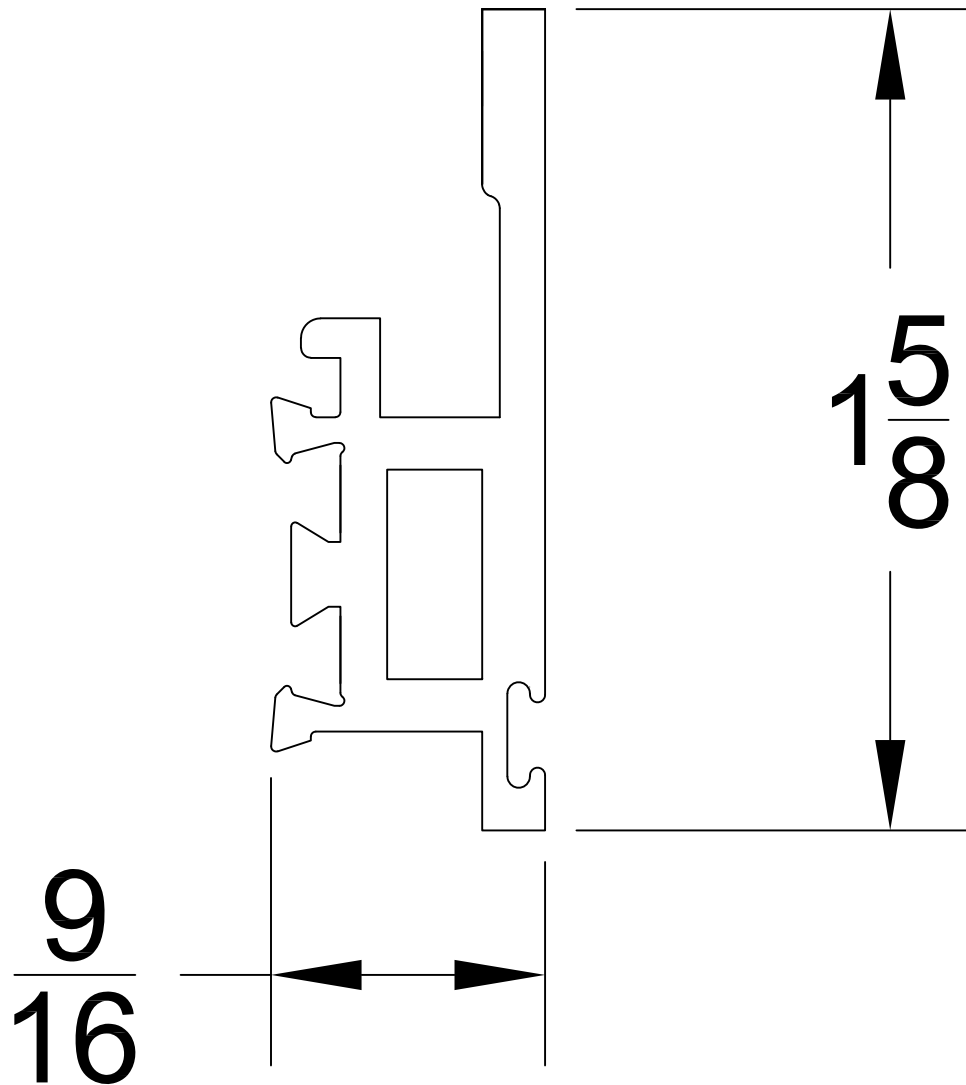
REV.:	DESCRIPTION:	DATE:
△		

JOB NAME: T225 V-6 DRAWINGS	CUSTOMER: ARCADIA CUSTOM	TITLE: DETAILS	PRODUCT: T225 SERIES	DRAWING #:
FINISH:	DRAWN BY: MANDIE WHITESIDE	SCALE: NONE	DATE: 6-18-19	SHEET: 2 OF 18

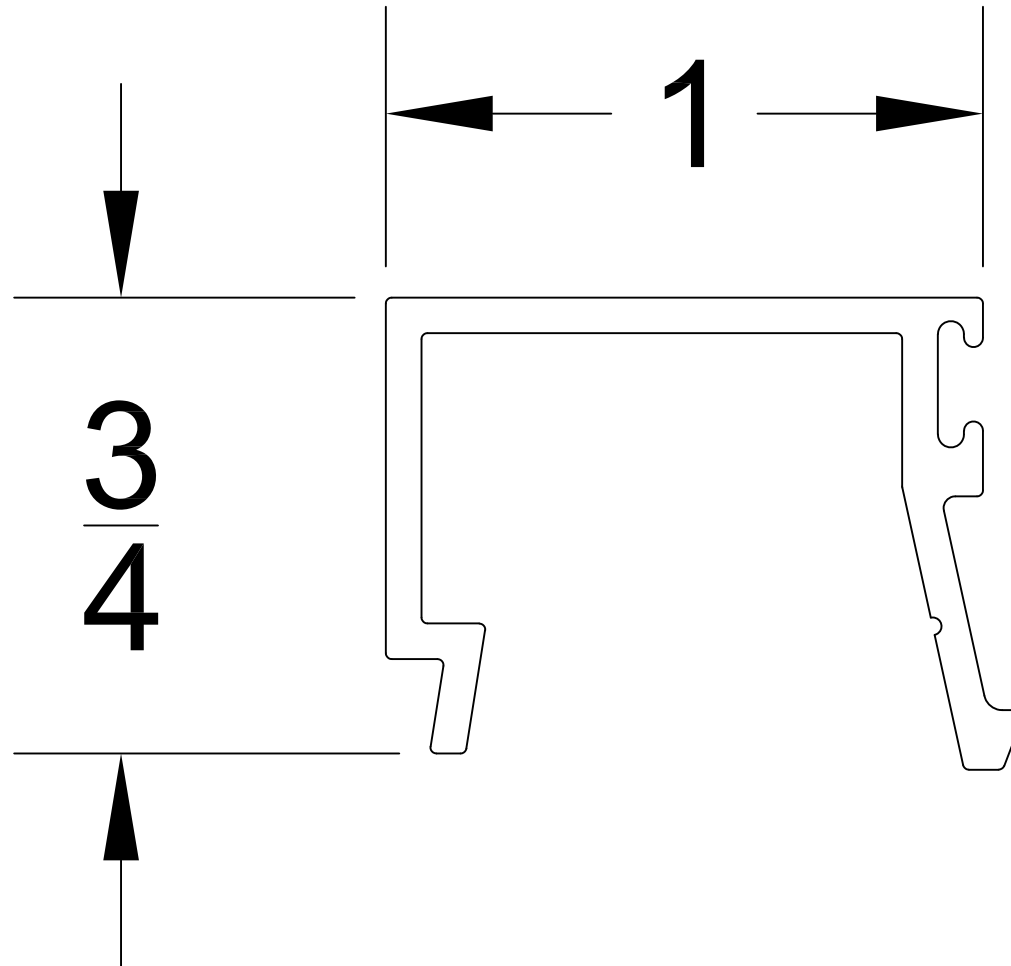
Part #1



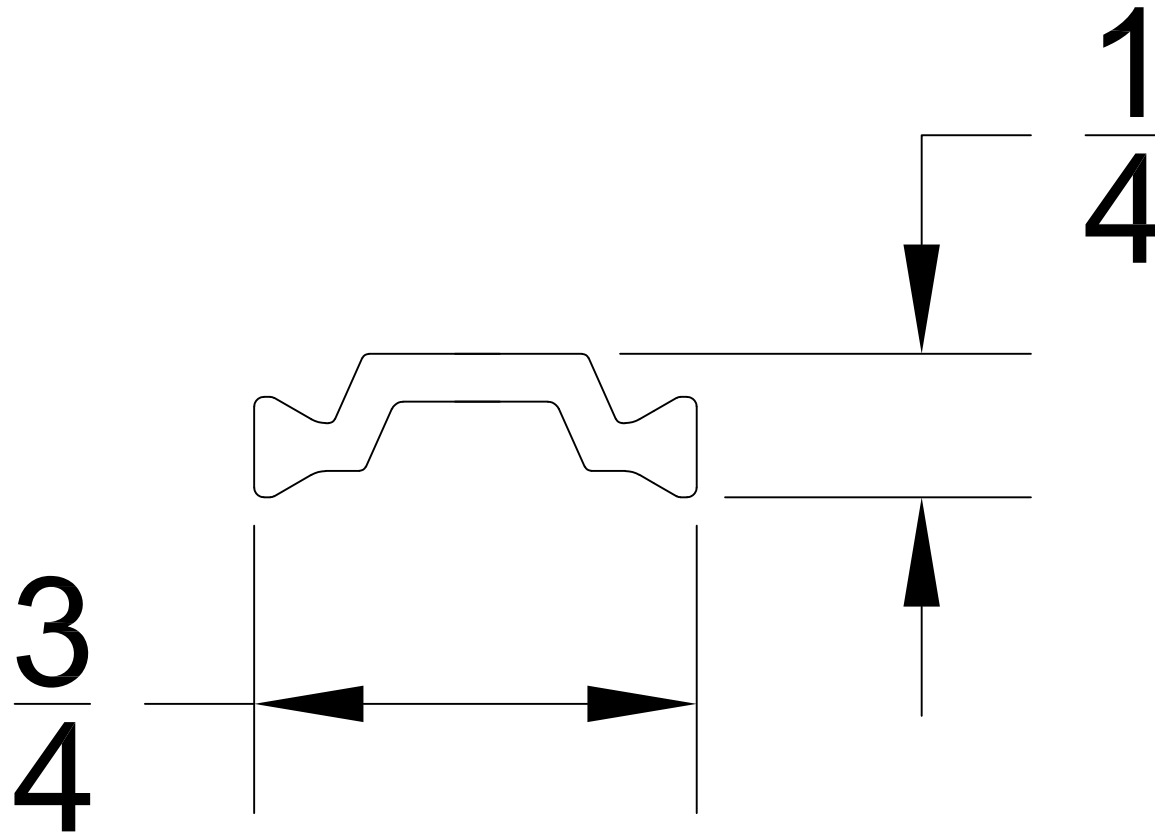
Part #2



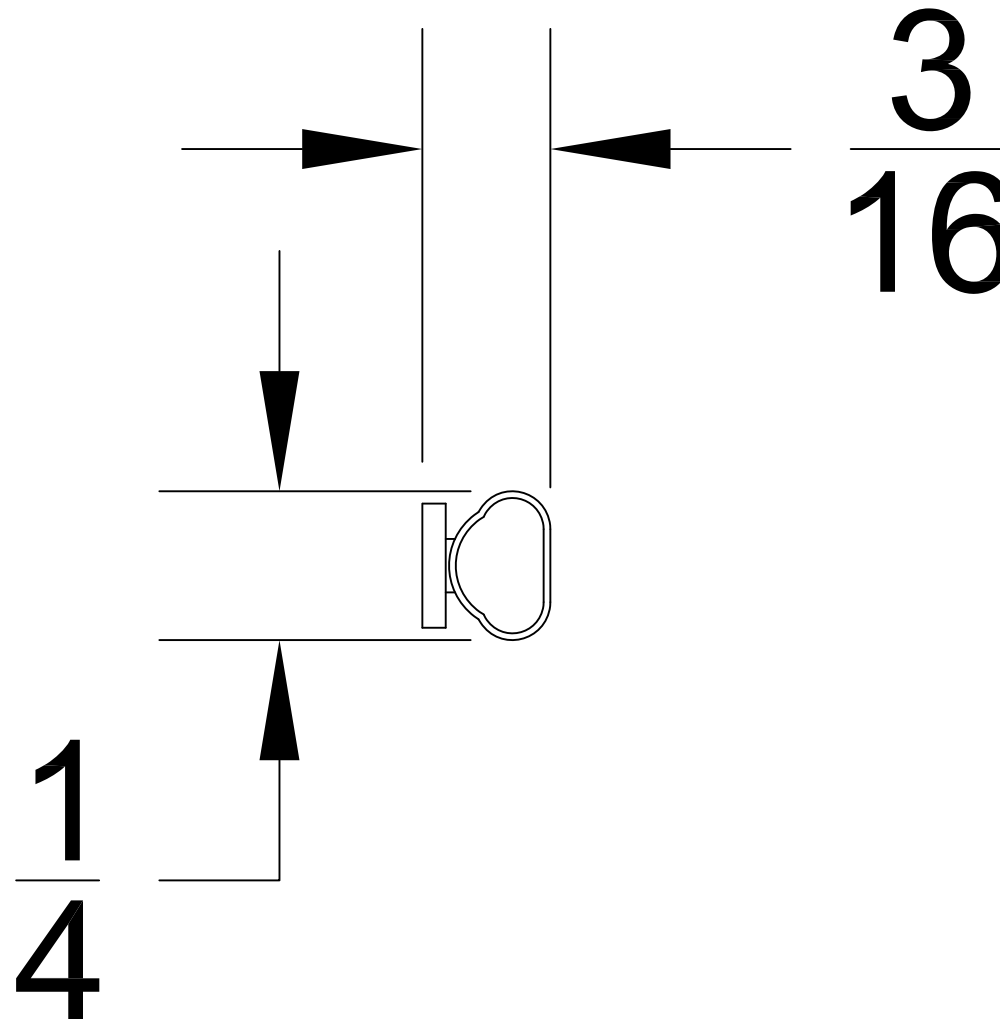
Part #3

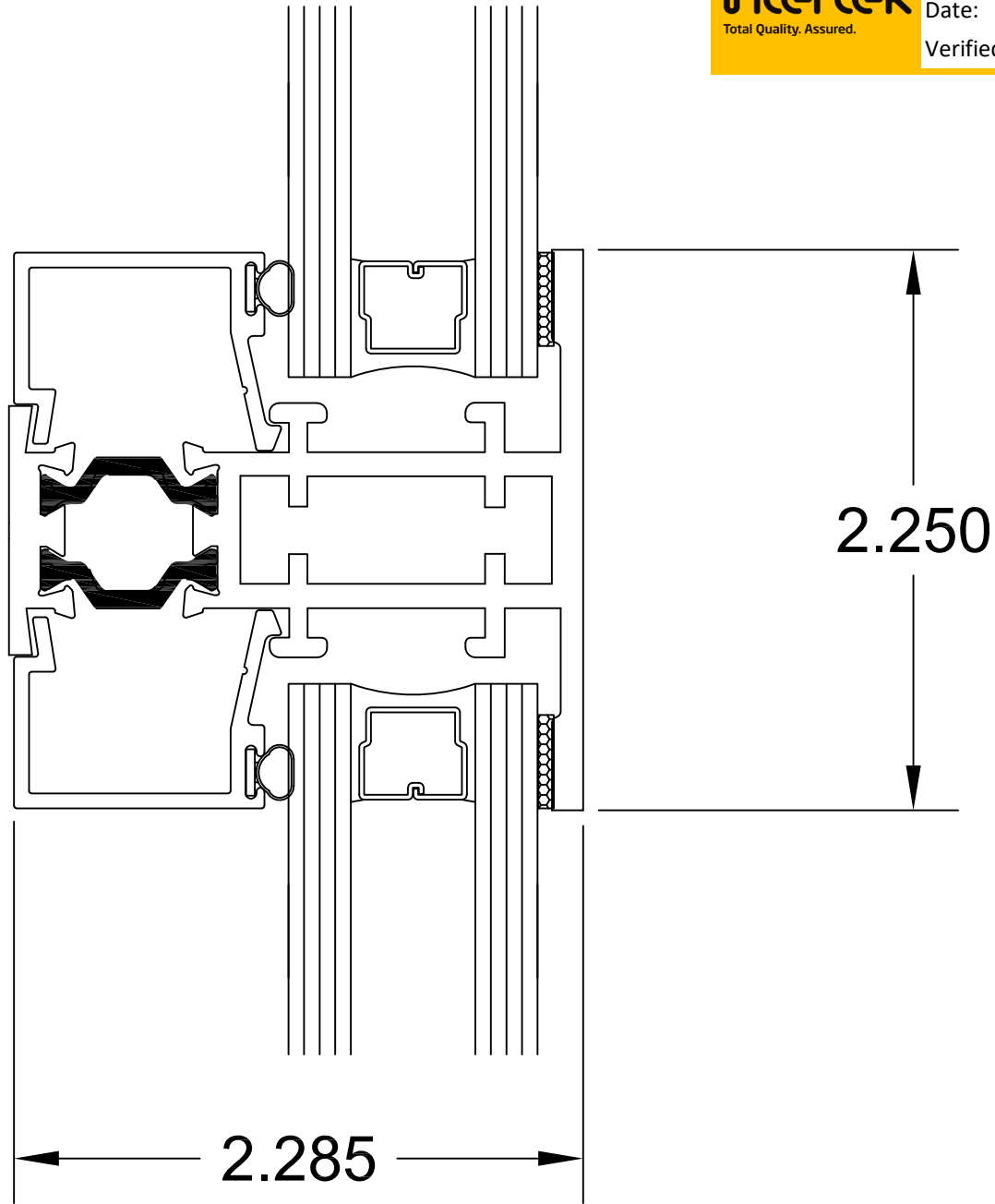


Part #4

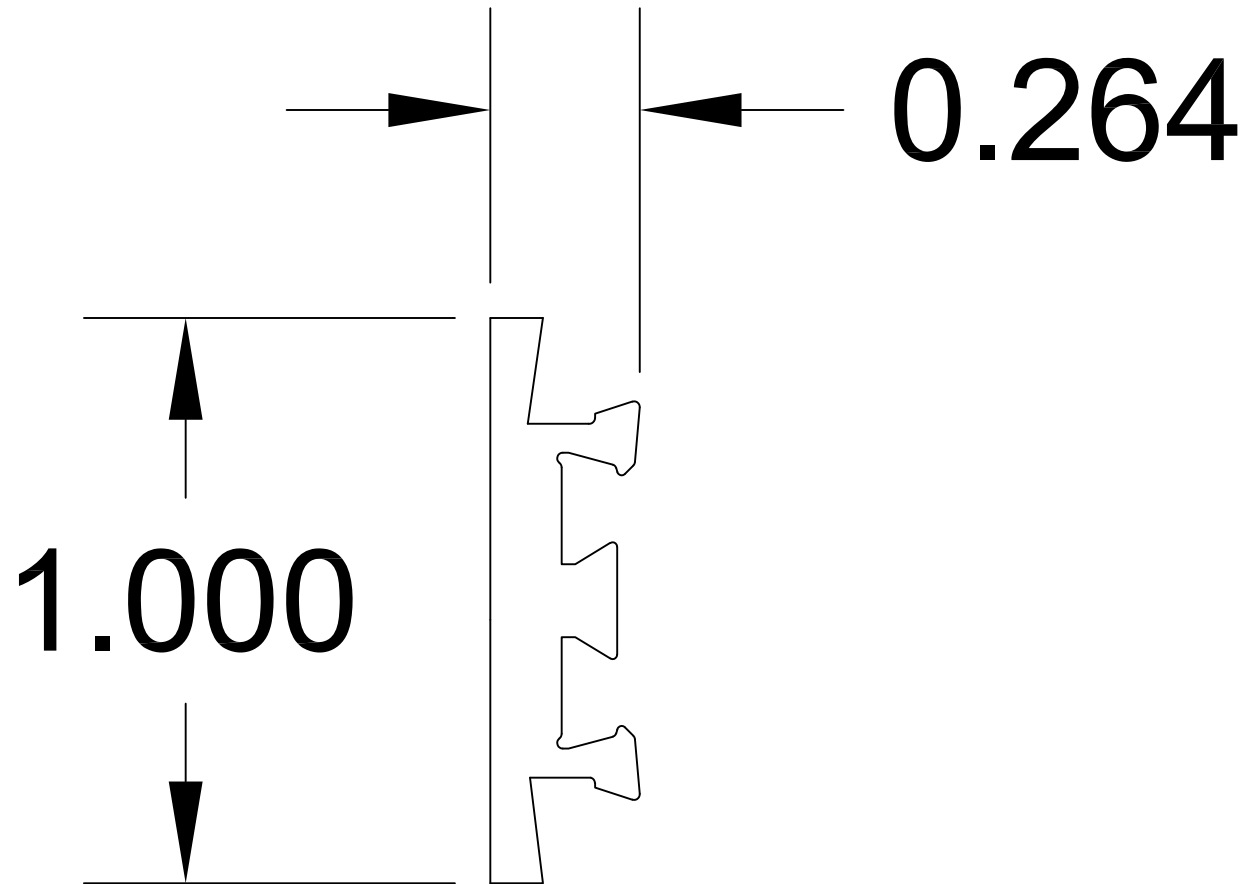


Part #5





Part #6



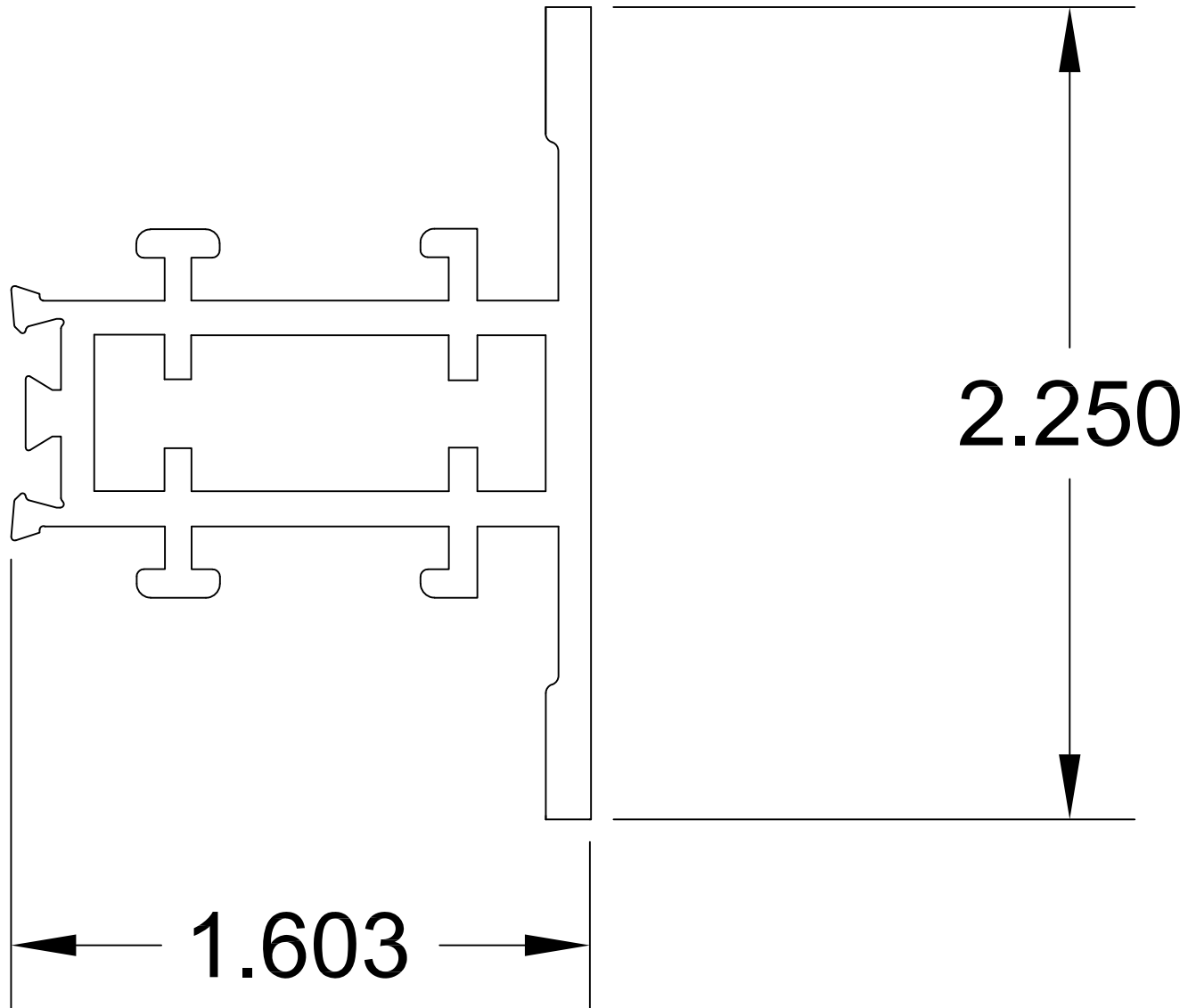
Part #7

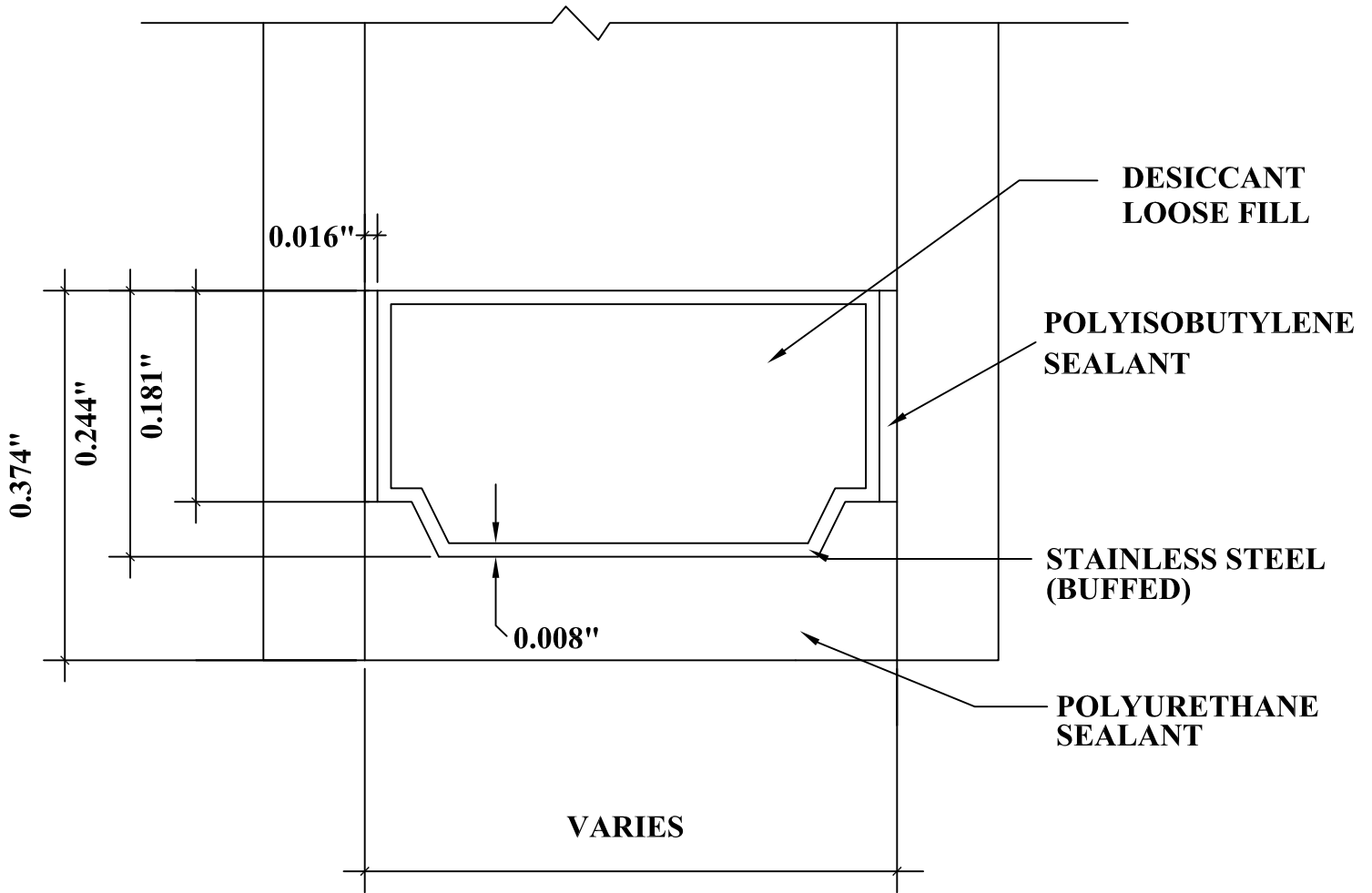
intertek
Total Quality. Assured.

Report #: K1697.01-301-45

Date: 10/17/19

Verified by: *D.J. Smith*





DETAIL FOR THERMAL MODELING OF
ALLMETAL LPX HI-Q STEEL SPACER



Total Quality. Assured.

2524 E. Jensen Ave
Fresno, CA 93706

Telephone: 559-233-8705
Facsimile: 717-764-4129
www.intertek.com/building

TEST REPORT FOR ARCADIA CUSTOM

Report No: K1697.01-301-45

Date: 10/18/19

SECTION 8

REVISION LOG

REVISION #	DATE	PAGES	REVISION
.01R0	10/18/19	N/A	Original report issued to customer.